



# Voidol RVC Mode User Guide

---

## Table of contents

### [1. Introduction](#)

[\(1\) Trademarks](#)

[\(2\) Request for use](#)

[\(3\) Recommended audio environment](#)

### [2. How to Use RVC Mode](#)

[\(1\) Audio Environment Settings](#)

[\(2\) Using RVC Mode](#)

[\(3\) How to add a generic RVC voice model other than our company](#)

### [3. Troubleshooting](#)

### [4. Support](#)

# 1. Introduction

---

If you wish to use this software in your company, you need to sign a Commercial License Agreement separately. Please refer to End User License Agreement for details.

If you have any questions, please contact us from this page.

[https://crimsontech.jp/rcvoice\\_sales/](https://crimsontech.jp/rcvoice_sales/)

## (1) Trademarks

- R.C.voice is a registered trademark of CRIMSON TECHNOLOGY, Inc.
- Voidol is a trademark of CRIMSON TECHNOLOGY, Inc.
- Described company name and product name in this guide are the registered trademarks or trademarks of each company.

## (2) Note to use RVC Mode

- The product and specifications described in this guide are subject to change without notice due to product improvements.
- Also, we have made every effort to complete the contents of this guide, but if there are any omissions, errors, or updates needed, please contact us at ( <https://crimsontech.jp/about-us/contact/?lang=en> ).
- Please note that we are not responsible for the effects of the operation results caused by any of the items mentioned above.

## (3) Recommended audio environment CPU: Intel® Core™ i7-9750H processor or higher

Memory: 16GB or more

GPU: NVIDIA® GeForce® GTX 1650 Video RAM 4GB GDDR5 or higher

Hard disk: 10GB free space or more (SSD recommended)

\* If you use the built-in speaker / microphone without an audio interface,  
Please be sure to use earphones or headphones so as not to cause feedback noise when you use built-in speaker / microphone.

## 2. How to Use RVC Mode

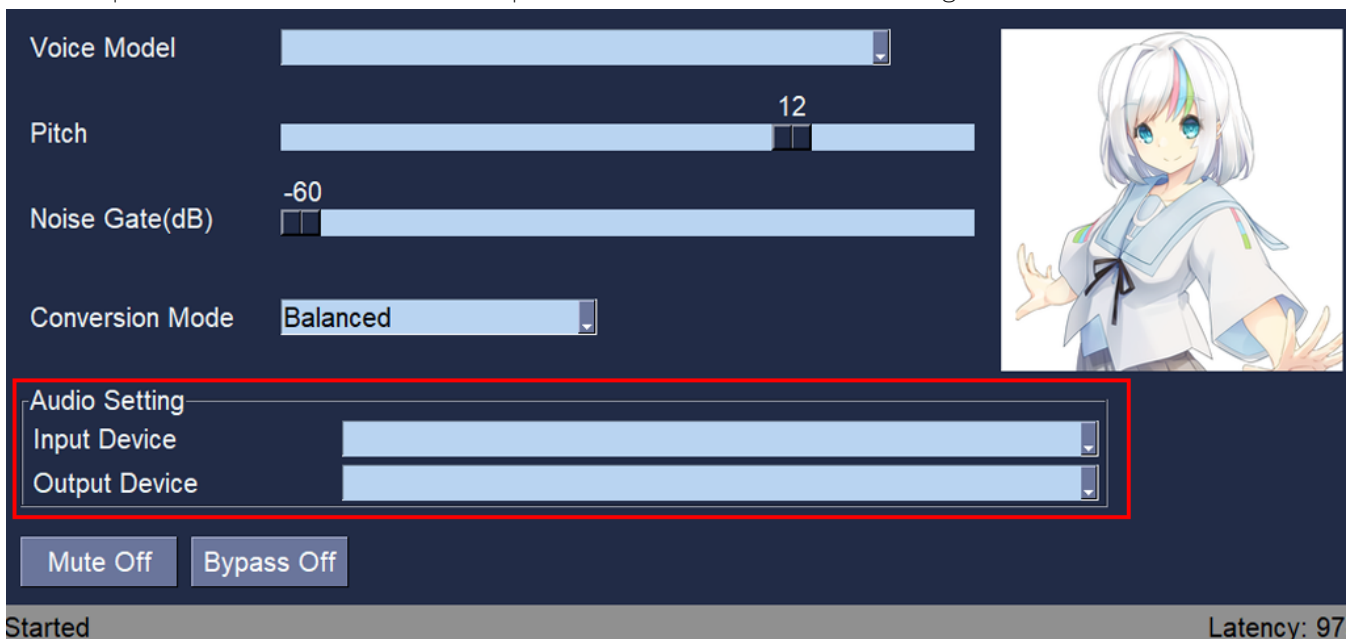
---

This chapter describes how to use RVC Mode voice conversion.  
The following items are included in this chapter.

- (1) Audio Environment Settings
  - (2) Using RVC Mode
  - (3) How to add a generic RVC voice model other than our company
- 

### (1) Audio Environment Settings

Set input devices in RVC mode and output devices to be used for monitoring



Select your microphone for "Input Device" and your speakers/headphones for "Output Device" in the audio settings. In this case, please be sure to use this application with headphones to avoid feedback. We recommend using an audio interface and a microphone together in order to enjoy comfortable and high quality audio conversion.

### (2) Using RVC Mode

The following is a step-by-step explanation of the main parameters for voice quality conversion on the RVC mode main screen.



#### (1) Voice Model

Allows selection of the character to be converted.

#### (2) Pitch

Allows you to adjust the voice height of the output voice.

#### (3) Noise Gate

Noise around the microphone can be reduced.

#### (4) Conversion Mode

High speed conversion...voice delay due to conversion is reduced, but PC load is increased and conversion quality is slightly degraded.

Balanced...Balanced mode that balances voice delay due to conversion, PC load, and conversion quality.

Quality oriented...PC load is reduced and conversion quality is improved, but voice delay due to conversion is increased.

\*If you experience voice interruption or noise in high speed conversion mode, your PC may not be up to specifications. Please try using the balanced mode or the quality-oriented mode.

#### (5) Mute / Bypass

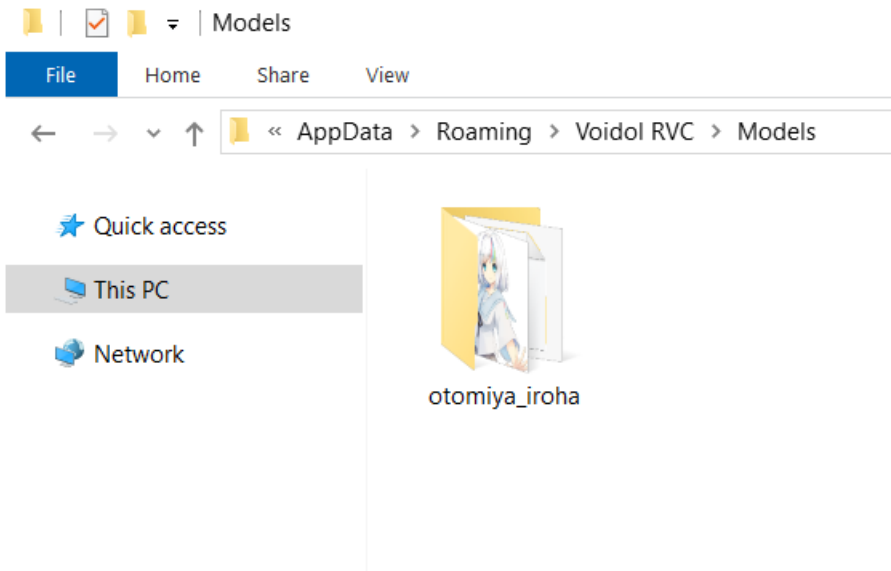
Mute Off...Clicking this button turns Mute On and mutes the output audio. Click again to return to the Mute Off state.

Bypass Off...Click this button to output the audio before conversion. Click again to return to the Bypass On state.

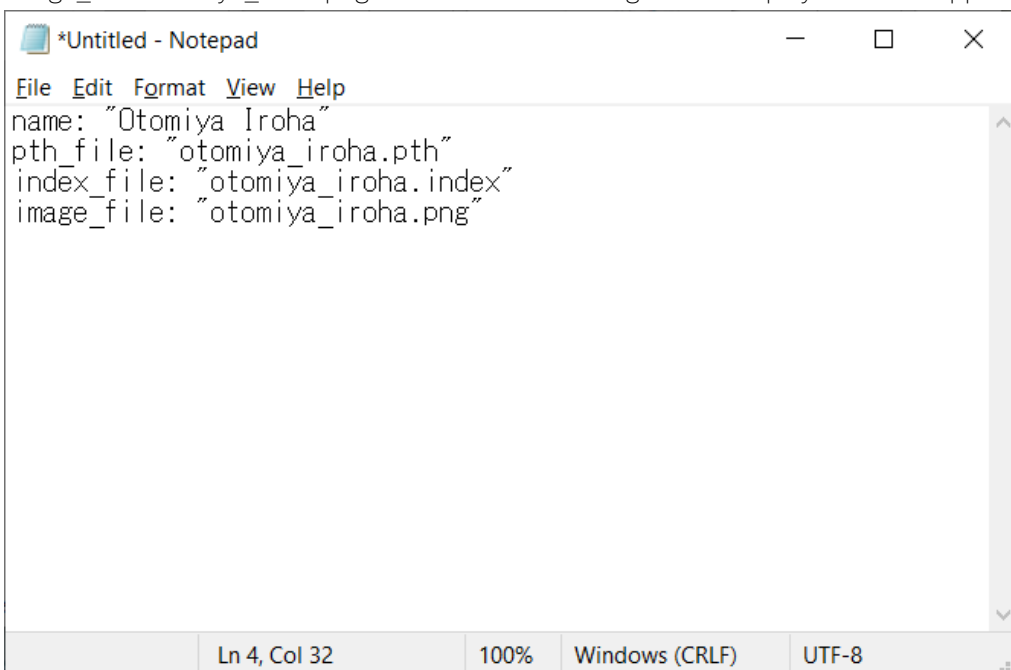
### (3) Adding a generic RVC Voice Model other than our company

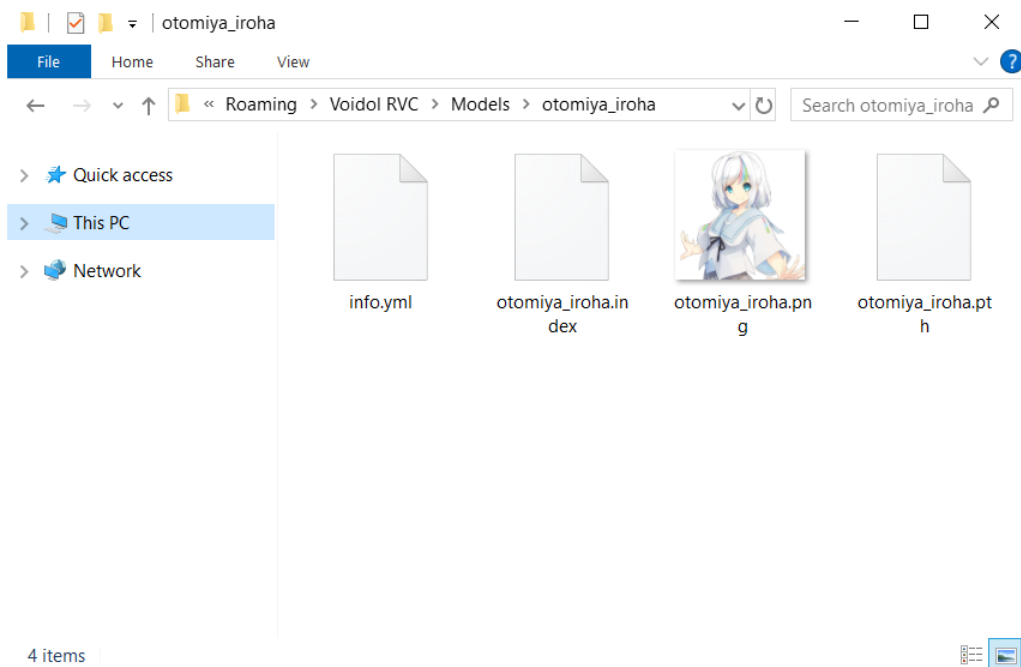
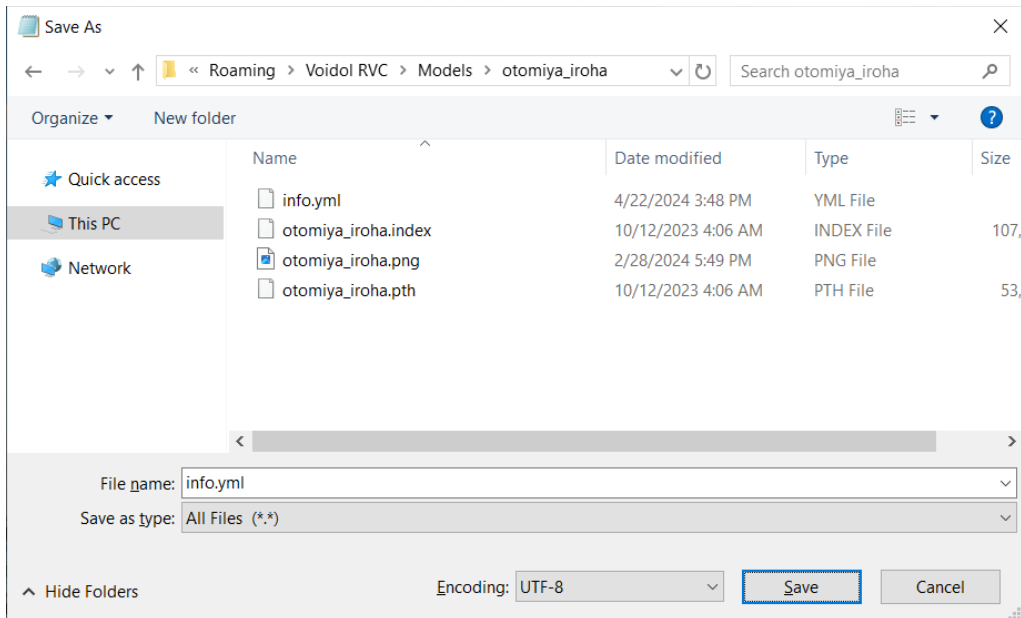
(a) Manually add a folder for voice models in the folder below and place the learned files (.pth and .index) in the created folder.

C:\Users\<user name>\AppData\Roaming\Voidol RVC\Models\<\*\*\*>( Any folder name)



(b) Open the standard Windows Notepad application and enter the following information.  
name: "Otomiya\_Iroha" →Name displayed on the application.  
pth\_file: "otomiya\_iroha.pth" The same name as the .pth file placed in (a) above.  
index\_file: "otomiya\_iroha.index" The same name as the .index file placed in (a).  
image\_file: "otomiya\_iroha.png" You can add an image to be displayed on the application.





Save the file as a name in the Voice Model folder in (a) → Select "All Files" for the file type → Rename the file to info.yml → Select "UTF-8" for the character encoding → Save  
Then restart RVC Mode.

\*We don't guarantee the operation of external RVC voice models other than our company.

### 3. Troubleshooting

#### 1. The original voice is output without conversion.

When "Bypass On" is selected, the original voice is output as it is without being converted to the character's voice. If it is set to "Bypass Off", please switch to "Bypass Off" and try again.

#### 2. No sound from the speakers.

If you cannot hear the voice from the speaker, it may be set to "Mute On". If it is on, switch to "Mute Off" and try again.

### 3. Sound breaks up at low volume voices.

If the Noise Gate value is set too high, the beginning or end of the voice may be unnaturally interrupted. Gradually increase the value from -60 to an uninterrupted setting. The conversion will still work at -60.

### 4. the sound of RVC Mode is interrupted when using it with video software.

Depending on the specifications of your PC, the conversion quality of RVC Mode may be affected due to the heavy load on the system when using video software. Please take measures such as closing all unused software so that your PC is not overloaded as much as possible.

## 4. Support

---

If the problem persists after trying the above, please contact us using this contact form (<https://crimsontech.jp/about-us/contact/?lang=en>).

There is no trial version of RVC Mode.

We do not offer refunds due to quality, as we assume that you purchase the software after testing it with the trial version of Voidol2. Also, please note that we do not provide support by phone, chat, etc.

※All information including product specifications, is current on the date of the press announcement, but is subject to change without prior notice.

※Mac App Store, macOS, iOS, Audio Units is a trademark of Apple Inc.

※Windows is a trademark of Microsoft Corporation.

※R.C.voice is a registered trademark of CRIMSON TECHNOLOGY, Inc.

※Described company name and product name are the registered trademarks or trademarks of each company.

Copyright © 2024 Crimson Technology Co., Ltd. All Rights Reserved.

User Guide created 2024 4/22